

**DYNAMIC MIXED-MEDIA DOODLE  
WORKSHOP WITH EMILY BEE**

**Saturday, May 16<sup>th</sup>  
11 am - 2 pm  
\$65 per person**

**EXPAND YOUR CREATIVITY & EXPLORE ABSTRACTION THROUGH  
DOODLING AND MAKING SPONTANEOUS MARKS ON THE PAGE WITH  
WATERCOLOR, PAINT MARKER AND PEN. WE WILL BUILD UNIQUE AND  
BEAUTIFULLY TEXTURED ARTWORKS THROUGH A COMBINATION OF  
THESE 3 MEDIUMS. IT'S SUPER FUN AND RELAXING!**

**AT ART & FRAME SARASOTA  
1055 S. TAMiami TRAIL STE. 102 SARASOTA, FL 34236**



**Art & Frame  
of Sarasota**

## **MATERIALS LIST**

- **Two black fine liner pens in 2 different sizes (one thin and one thicker - Micron or Pentel Arts Hybrid Tecnica are recommended)**
- **3 to 6 paint markers in any colors you love (Posca is recommended but any creamy opaque paint marker will do)**
- **Two sheets of 9" x 12" 140lb. watercolor paper either cold or soft or press (Mixed media paper also works, any 140lb. weight paper)**
- **3 colors of watercolor pigment (from either pan or tube) : a red, a yellow and a blue, plus any additional colors you'd like to use**
- **Two watercolor brushes: a small round (such as #2) and medium sized round (such as #8)**
- **A few sheets of paper towels**
- **Painter's tape for dividing one sheet of paper into a grid of 6 square segments**

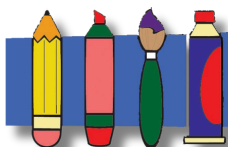
**EMILY BEE IS A DOODLE AND WATERCOLOR ARTIST AND HAS BEEN DOODLING FOR MORE THAN 20 YEARS. SHE FINDS DEEP JOY IN SHARING THIS UPLIFTING CREATIVE & THERAPEUTIC PRACTICE WITH OTHERS. SHE'S CURRENTLY ILLUSTRATING HER FIRST DOODLE COLORING BOOK.**

**[WWW.EMILYBEESON.COM](http://WWW.EMILYBEESON.COM)**

**INSTAGRAM: @EMILYBEE\_\_ART**



***CALL 941-366-2301 TO RESERVE YOUR SEAT!***



**Art & Frame**  
of Sarasota

**This workshop is  
Beginner/Intermediate level.  
Some watercolor experience  
preferred but not required.**